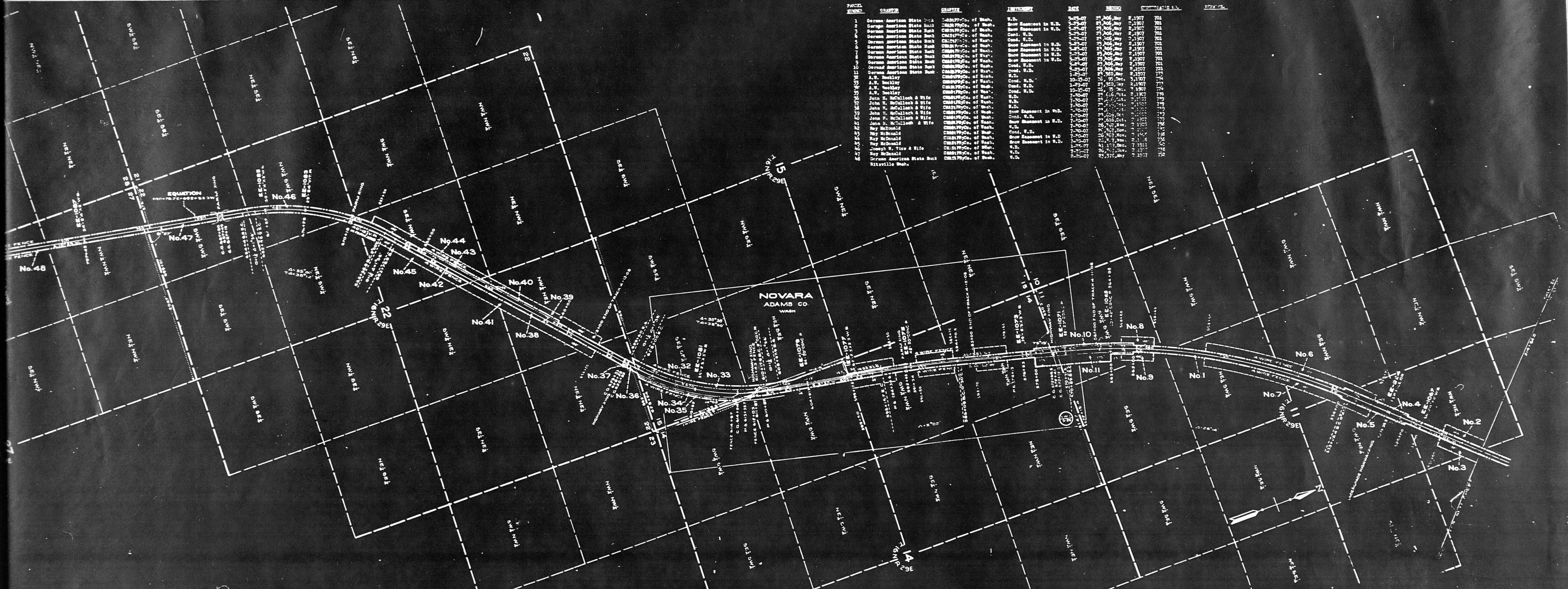


PARCEL NUMBER	GRANTOR	GRANTEE	INSTRUMENT	DATE	RECORD	CONTAINERS	SQ. FT.
1	German American State Bank	CHAS RyCo. of Wash.	W.D.	2-23-07	25,405, May	#1907	701
2	German American State Bank	CHAS RyCo. of Wash.	W.D.	2-23-07	25,405, May	#1907	701
3	German American State Bank	CHAS RyCo. of Wash.	W.D.	2-23-07	25,405, May	#1907	701
4	German American State Bank	CHAS RyCo. of Wash.	W.D.	2-23-07	25,405, May	#1907	701
5	German American State Bank	CHAS RyCo. of Wash.	W.D.	2-23-07	25,405, May	#1907	701
6	German American State Bank	CHAS RyCo. of Wash.	W.D.	2-23-07	25,405, May	#1907	701
7	German American State Bank	CHAS RyCo. of Wash.	W.D.	2-23-07	25,405, May	#1907	701
8	German American State Bank	CHAS RyCo. of Wash.	W.D.	2-23-07	25,405, May	#1907	701
9	German American State Bank	CHAS RyCo. of Wash.	W.D.	2-23-07	25,405, May	#1907	701
10	German American State Bank	CHAS RyCo. of Wash.	W.D.	2-23-07	25,405, May	#1907	701
11	German American State Bank	CHAS RyCo. of Wash.	W.D.	2-23-07	25,405, May	#1907	701
12	German American State Bank	CHAS RyCo. of Wash.	W.D.	2-23-07	25,405, May	#1907	701
13	German American State Bank	CHAS RyCo. of Wash.	W.D.	2-23-07	25,405, May	#1907	701
14	German American State Bank	CHAS RyCo. of Wash.	W.D.	2-23-07	25,405, May	#1907	701
15	German American State Bank	CHAS RyCo. of Wash.	W.D.	2-23-07	25,405, May	#1907	701
16	German American State Bank	CHAS RyCo. of Wash.	W.D.	2-23-07	25,405, May	#1907	701
17	German American State Bank	CHAS RyCo. of Wash.	W.D.	2-23-07	25,405, May	#1907	701
18	German American State Bank	CHAS RyCo. of Wash.	W.D.	2-23-07	25,405, May	#1907	701
19	German American State Bank	CHAS RyCo. of Wash.	W.D.	2-23-07	25,405, May	#1907	701
20	German American State Bank	CHAS RyCo. of Wash.	W.D.	2-23-07	25,405, May	#1907	701
21	German American State Bank	CHAS RyCo. of Wash.	W.D.	2-23-07	25,405, May	#1907	701
22	German American State Bank	CHAS RyCo. of Wash.	W.D.	2-23-07	25,405, May	#1907	701
23	German American State Bank	CHAS RyCo. of Wash.	W.D.	2-23-07	25,405, May	#1907	701
24	German American State Bank	CHAS RyCo. of Wash.	W.D.	2-23-07	25,405, May	#1907	701
25	German American State Bank	CHAS RyCo. of Wash.	W.D.	2-23-07	25,405, May	#1907	701
26	German American State Bank	CHAS RyCo. of Wash.	W.D.	2-23-07	25,405, May	#1907	701
27	German American State Bank	CHAS RyCo. of Wash.	W.D.	2-23-07	25,405, May	#1907	701
28	German American State Bank	CHAS RyCo. of Wash.	W.D.	2-23-07	25,405, May	#1907	701
29	German American State Bank	CHAS RyCo. of Wash.	W.D.	2-23-07	25,405, May	#1907	701
30	German American State Bank	CHAS RyCo. of Wash.	W.D.	2-23-07	25,405, May	#1907	701
31	German American State Bank	CHAS RyCo. of Wash.	W.D.	2-23-07	25,405, May	#1907	701
32	German American State Bank	CHAS RyCo. of Wash.	W.D.	2-23-07	25,405, May	#1907	701
33	German American State Bank	CHAS RyCo. of Wash.	W.D.	2-23-07	25,405, May	#1907	701
34	German American State Bank	CHAS RyCo. of Wash.	W.D.	2-23-07	25,405, May	#1907	701
35	German American State Bank	CHAS RyCo. of Wash.	W.D.	2-23-07	25,405, May	#1907	701
36	German American State Bank	CHAS RyCo. of Wash.	W.D.	2-23-07	25,405, May	#1907	701
37	German American State Bank	CHAS RyCo. of Wash.	W.D.	2-23-07	25,405, May	#1907	701
38	German American State Bank	CHAS RyCo. of Wash.	W.D.	2-23-07	25,405, May	#1907	701
39	German American State Bank	CHAS RyCo. of Wash.	W.D.	2-23-07	25,405, May	#1907	701
40	German American State Bank	CHAS RyCo. of Wash.	W.D.	2-23-07	25,405, May	#1907	701
41	German American State Bank	CHAS RyCo. of Wash.	W.D.	2-23-07	25,405, May	#1907	701
42	German American State Bank	CHAS RyCo. of Wash.	W.D.	2-23-07	25,405, May	#1907	701
43	German American State Bank	CHAS RyCo. of Wash.	W.D.	2-23-07	25,405, May	#1907	701
44	German American State Bank	CHAS RyCo. of Wash.	W.D.	2-23-07	25,405, May	#1907	701
45	German American State Bank	CHAS RyCo. of Wash.	W.D.	2-23-07	25,405, May	#1907	701
46	German American State Bank	CHAS RyCo. of Wash.	W.D.	2-23-07	25,405, May	#1907	701
47	German American State Bank	CHAS RyCo. of Wash.	W.D.	2-23-07	25,405, May	#1907	701
48	German American State Bank	CHAS RyCo. of Wash.	W.D.	2-23-07	25,405, May	#1907	701



RIGHT OF WAY AND TRACK MAP
CHICAGO, MILWAUKEE & ST. PAUL RY. CO.
 OPERATED BY THE
CHICAGO, MILWAUKEE & ST. PAUL RY. CO.
 COLUMBIA DIVISION MAIN LINE
 STATION 814+84 TO STATION 5789+80.8
 SCALE: 1 IN. = 400 FT. JUNE 28, 1910.
 OFFICE OF VALUATION ENGINEER
 CHICAGO, ILLINOIS.

Sheet No. 15 of 17. Plans of C. M. & St. P. Ry. Co. Main Line
 from survey station 714+54.4 to survey station 727+89.8
A. E. Lodge
 Valuation Engineer

